

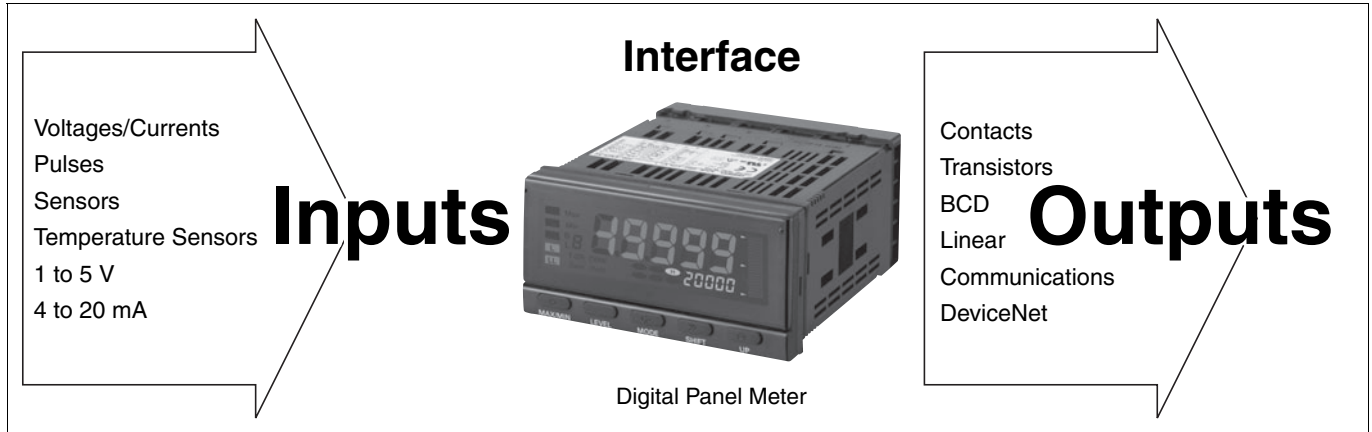
Overview of Digital Panel Meters

■ The Role of Digital Panel Meters

Digital Panel Meters digitally process measurement data such as analog signals from linear sensors (including voltages and currents) and pulse signals. It then converts and displays the data. They can also act as interfaces (see note) by performing operations such as comparisons with user-set values, and transmitting data to computers and PLCs.

OMRON Digital Panel Meters have good visibility in the field, are easy to use, are waterproof, and conform to international standards. Communications with host computers or programmable controllers have been improved to provide functionality for advanced information systems, such as data collection to increase operating rates and data recording capabilities to provide for implementing measures for PL laws and ISO.

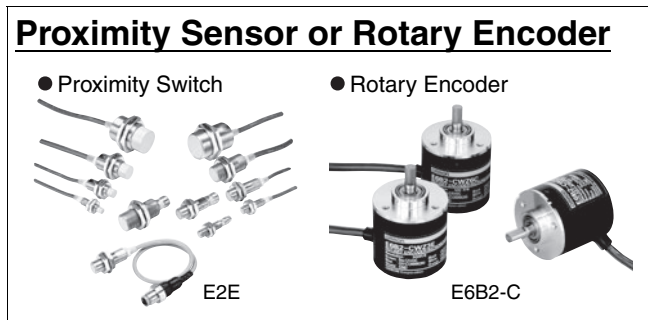
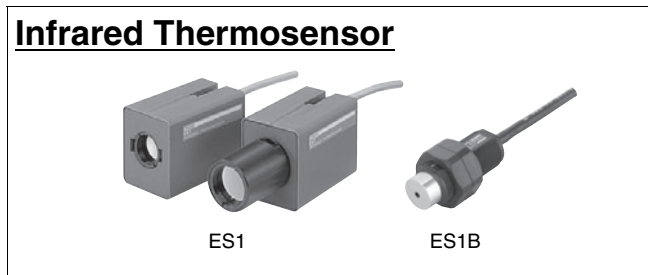
Note: An interface is the boundary between two devices.



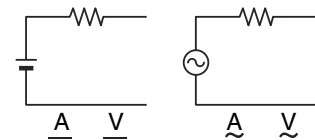
■ Analog Signals

• An analog signal is signal that changes continuously.

- Types:
- 4 to 20 mA DC
 - 1 to 5 VDC
 - 0 to 5 VDC
 - 0 to 10 VDC



A Wide Range of Voltages/Currents



Displacement, Length Measurement, or Linear Output Sensors

