

---

---

**Guide to the China Compulsory Certification System**

**December 2009  
OMRON Corporation  
Industrial Automation Company**

---

---

## Contents

	Page
1. What Is CCC?	3
2. Procedure for Judging If a Product Is Subject to CCC	5
3. Handling by Export Type	7
(1) Exporting OMRON Products Individually to China	7
(2) Exporting OMRON Products Built into the Customer's Equipment	7
4. Items Subject to CCC/Items Not Subject to CCC and Items Certified for CCC	8
5. FAQ	9

This guide is an overview of the China Compulsory Certification (CCC) System and a summary of the status of compliance for OMRON products as of December 2009.

---

---

## 1. What Is CCC?

CCC is an abbreviation for China Compulsory Certification. This new certification system was announced and implemented by the General Administration of Quality Supervision and Inspection and Quarantine of the People's Republic of China (AQSIQ) and the Certification and Accreditation Administration of the People's Republic of China (CNCA) on May 1, 2002. The CCC system pertains to safety requirements, such as EMC for products sold in China, and as of August 1, 2003, products that have not obtained the CCC are prohibited from commercial activities, including shipment in China, import to China, and sale in China.

Requirements for products subject to CCC were initially applied to 132 product categories in 19 groups for primary compulsory items (e.g., electronics, electrical products, components, materials, and vehicles). Frequent additions have been announced, however, and as of September 2009, the range of items subject to the requirements includes 160 product categories in 22 groups.

Products that are given the CCC must display the CCC Mark. At present, there are five types of CCC Marks depending on the certification details (e.g., safety, EMC, safety and EMC, firefighting products, and wireless LAN). OMRON products are subject to certification for safety.



The S stands for "safety."

### Examples of CCC Marking for Certified Products

OMRON WL Limit Switch



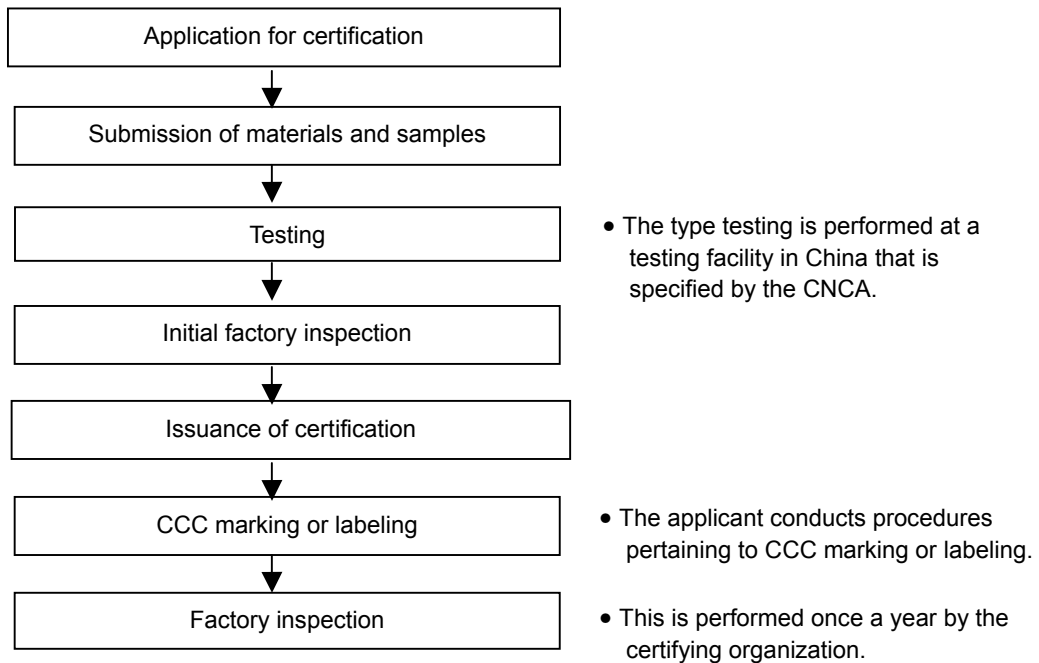
←Area with mark  
(enlarged)

---

---

### Application Flowchart to Obtain CCC

The following flowchart gives an overview of the process flow from application until obtaining CCC.



---

---

## **2. Procedure for Judging If a Product Is Subject to CCC**

OMRON uses the following procedure to judge if a product is subject to CCC.

**(1) The voltage rating is checked.**

If either the input voltage or output voltage of the product is 36 V AC or DC or higher, the judgment in the following item 2 is made. Otherwise, the product is judged to be not subject to CCC.

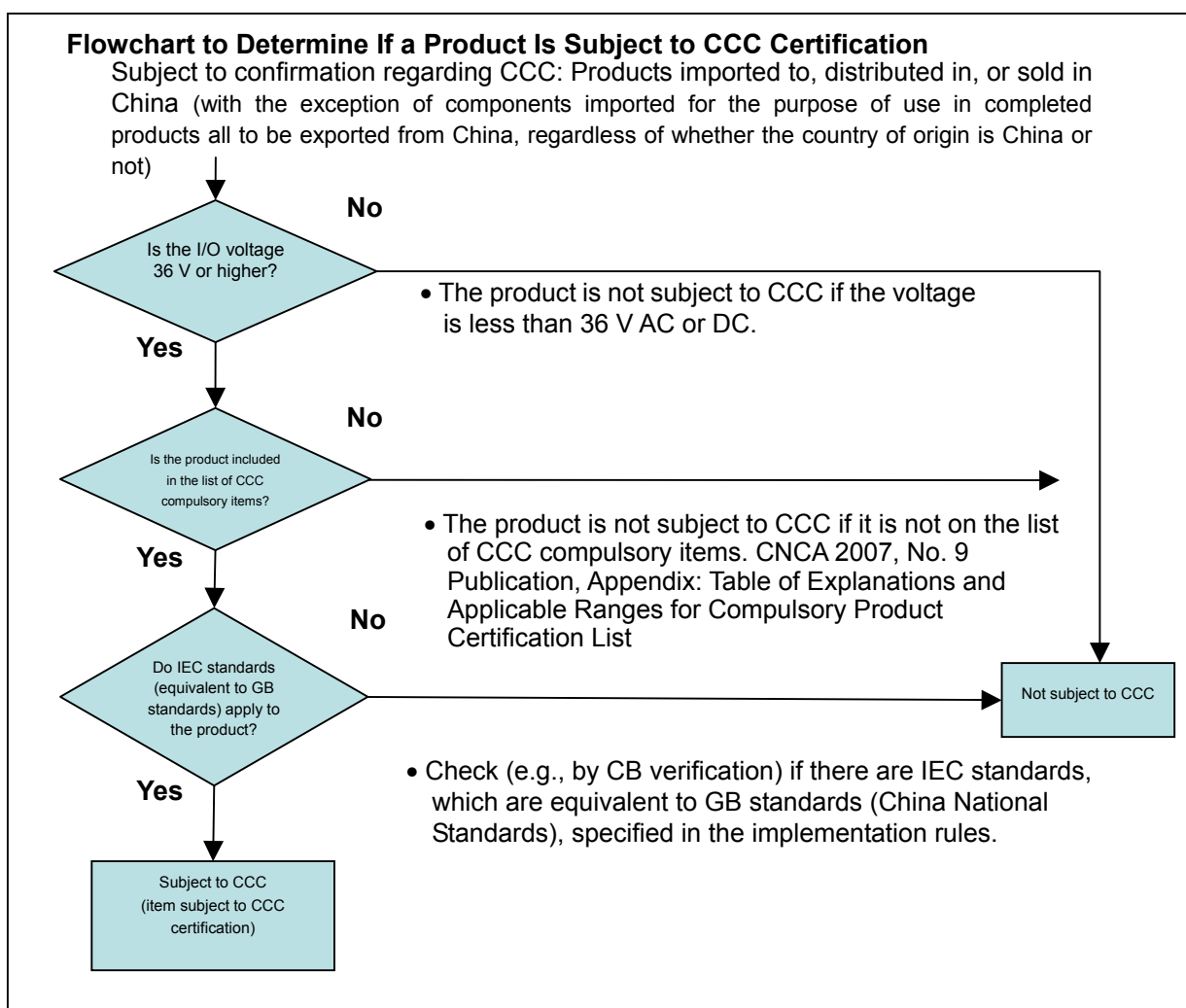
**(2) The list of CCC compulsory items is checked.**

If the product is included in the list of CCC compulsory items, the judgment in the following item 3 is made. Otherwise, the product is judged to be not subject to CCC.

**(3) Existence of an applicable standard is checked.**

Judgment (by CB verification) is made as to whether any IEC standards, which are equivalent to GB standards (China National Standards), apply to the product. The product is subject to CCC if there is a standard that applies.

The following flowchart shows the procedure to determine if a product is subject to CCC as described above.



---

---

## Reference

The following items are included in the list of CCC compulsory items (as of September 2009). OMRON products correspond to group 3 for low-voltage electrical components in the following list.

Group	Product list
1	Electrical Wires and Cables
2	Switches for Circuits, Installation Protective and Connection Devices
3	Low-voltage Electrical Apparatus Leakage prevention equipment, circuit breakers (including RCCB, RCBO, and MCB), fuses, low-voltage switches (isolators, separate switches, fuse equipment), other circuit protection equipment (protection devices: current limiters, circuit protection equipment, overcurrent protection equipment, thermal protectors, overload relays, low-voltage device electrical contactors, and motor starters), relays (36 V < voltage ≤ 1,000 V), other switches (appliance switches, vacuum switches, pressure switches, proximity switches, foot switches, thermal switches, hydraulic switches, button switches, limit switches, micro-switches, bidirectional switches, temperature switches, travel switches, selector switches, automatic selector switches, and knife switches), other equipment (contactors, motor starters, signal lamps, auxiliary contact equipment, automatic controllers, AC semiconductor motor controllers, and starters), and low-voltage switching equipment
4	Low Power Motors
5	Electric Tools
6	Welding Machines
7	House and Similar Use Appliances
8	Audio and Video Apparatus (not including car audio equipment or audio equipment equivalent to those for television or radio broadcasting stations)
9	IT Equipment
10	Lighting equipment (not including lighting equipment with voltage below 36 V)
11	Telecommunications terminal equipment
12	Motor Vehicles and Safety Parts
13	Tires
14	Safety glass
15	Agricultural Machinery
16	Latex Products
17	Medical Devices
18	Fire Fighting Products
19	Security and Protection Products
20	Toys
21	Wireless Local Area Network Products
22	Decoration Products

---

---

---

---

### **3. Handling by Export Type**

Handling depends on whether the OMRON product is individually exported to China or exported built into the customer's equipment.

#### **(1) Exporting OMRON Products Individually to China**

If the product is exported individually to China, CCC must be obtained if the product is an item that is subject to CCC. According to the CNCA 2008, No. 38 notice, however, a product that has not been certified for CCC can be exported individually if an application for exemption is submitted and approved.

For details on the application for exemption, the customer should check with the inspection and quarantine departments for the specific regions of China to which the product will be exported.

#### **(2) Exporting OMRON Products Built into the Customer's Equipment**

If an OMRON product is exported to China as a component inside equipment, it is not necessary to obtain CCC for the OMRON product if the equipment has itself obtained CCC. Depending on the functions for which the equipment that includes the OMRON product is used, however, it may be required when clearing customs or in China to check if CCC has been obtained. Whether checking is required depends on the equipment, and so the customer should check with the inspection and quarantine departments for the specific regions of China to which the product will be exported.

---

---

#### **4. Items Subject to CCC/ Items Not Subject to CCC and Items Certified for CCC**

Information on OMRON products that obtain CCC is available on the OMRON website.

OMRON Industrial Automation Global *Models with Standards Certification*

URL: <http://www.ia.omron.com/support/models/>

The following OMRON product categories have been determined to be not subject to CCC.

##### Items Not Subject to CCC

Programmable Controllers
Programmable Terminals
Vision Sensors
Temperature Controllers
Wireless devices
RFID systems
Code Readers and Laser Markers
Inverters
Power Supplies
Servomotors and Servo Drives

Contact the following for queries and further information.

OMRON Industrial Automation Global *Contact*

URL: <https://www.ia.omron.com/view/contact/input.cgi>

Or ask your OMRON representative for details.

OMRON Industrial Automation Global *Global Network*

URL: [http://www.ia.omron.com/global\\_network/index.html](http://www.ia.omron.com/global_network/index.html)



---

---

## **5. FAQ**

### **(1) Judging Whether an OMRON Product Is Subject to CCC**

Q 1-1 In the process flow to determine if a product is subject to CCC, are all models not subject to CCC if the I/O voltage is below 36 V AC or DC?

A 1-1 Yes, all models of OMRON products are determined to be not subject to CCC in that case. For example, a Sensor driven by 24 VDC drive is not subject to CCC.

Q 1-2 If a Power Supply has an input of 100 VAC, is it not subject to CCC?

A 1-2 The input voltage is 36 V or higher, but it is not included in the list of compulsory items, and so it is not subject to CCC.

Q 1-3 Does the model number identify whether the product has been certified for CCC?

A 1-3 Model numbers make no distinction for CCC. The appropriate model can be selected from the list of models that have obtained CCC on the OMRON website.

OMRON Industrial Automation Global *Models with Standards Certification*

URL: <http://www.ia.omron.com/support/models/>

Refer to the contact for information on individual models.

OMRON Industrial Automation Global *Contact*

URL: <https://www.ia.omron.com/view/contact/input.cgi>

Or ask your OMRON representative for details.

OMRON Industrial Automation Global *Global Network*

URL: [http://www.ia.omron.com/global\\_network/index.html](http://www.ia.omron.com/global_network/index.html)

Q 1-4 How can it be determined if models that are not included in the list of “Items Not Subject to CCC” on page 8 of this text are subject to CCC?

A 1-4 Refer to the Contact or ask your OMRON representative for details as well as the links in item A 1-3 above.

### **(2) Building OMRON Products into the Customer’s Equipment**

Q 2-1 When equipment is exported to China, will the built-in components be checked at customs clearance for CCC?

A 2-1 If the equipment is subject to CCC, a component may be checked for CCC depending on the functions that the built-in component performs. We recommend that you use CCC-certified products for built-in components.

---

---

**OMRON Corporation Industrial Automation Company**

Tokyo, JAPAN

Contact: [www.ia.omron.com](http://www.ia.omron.com)

**Regional Headquarters**

**OMRON EUROPE B.V.**

Wegalaan 67-69-2132 JD Hoofddorp  
The Netherlands

Tel: (31)2356-81-300/Fax: (31)2356-81-388

**OMRON ELECTRONICS LLC**

One Commerce Drive Schaumburg,  
IL 60173-5302 U.S.A.

Tel: (1) 847-843-7900/Fax: (1) 847-843-7787

**OMRON ASIA PACIFIC PTE. LTD.**

No. 438A Alexandra Road # 05-05/08 (Lobby 2),  
Alexandra Technopark,  
Singapore 119967

Tel: (65) 6835-3011/Fax: (65) 6835-2711

**OMRON (CHINA) CO., LTD.**

Room 2211, Bank of China Tower,  
200 Yin Cheng Zhong Road,  
PuDong New Area, Shanghai, 200120, China  
Tel: (86) 21-5037-2222/Fax: (86) 21-5037-2200

**Authorized Distributor:**

© OMRON Corporation 2009 All Rights Reserved.  
In the interest of product improvement,  
specifications are subject to change without notice.

**Cat. No. Y203-E1-01**

Printed in Japan  
1209