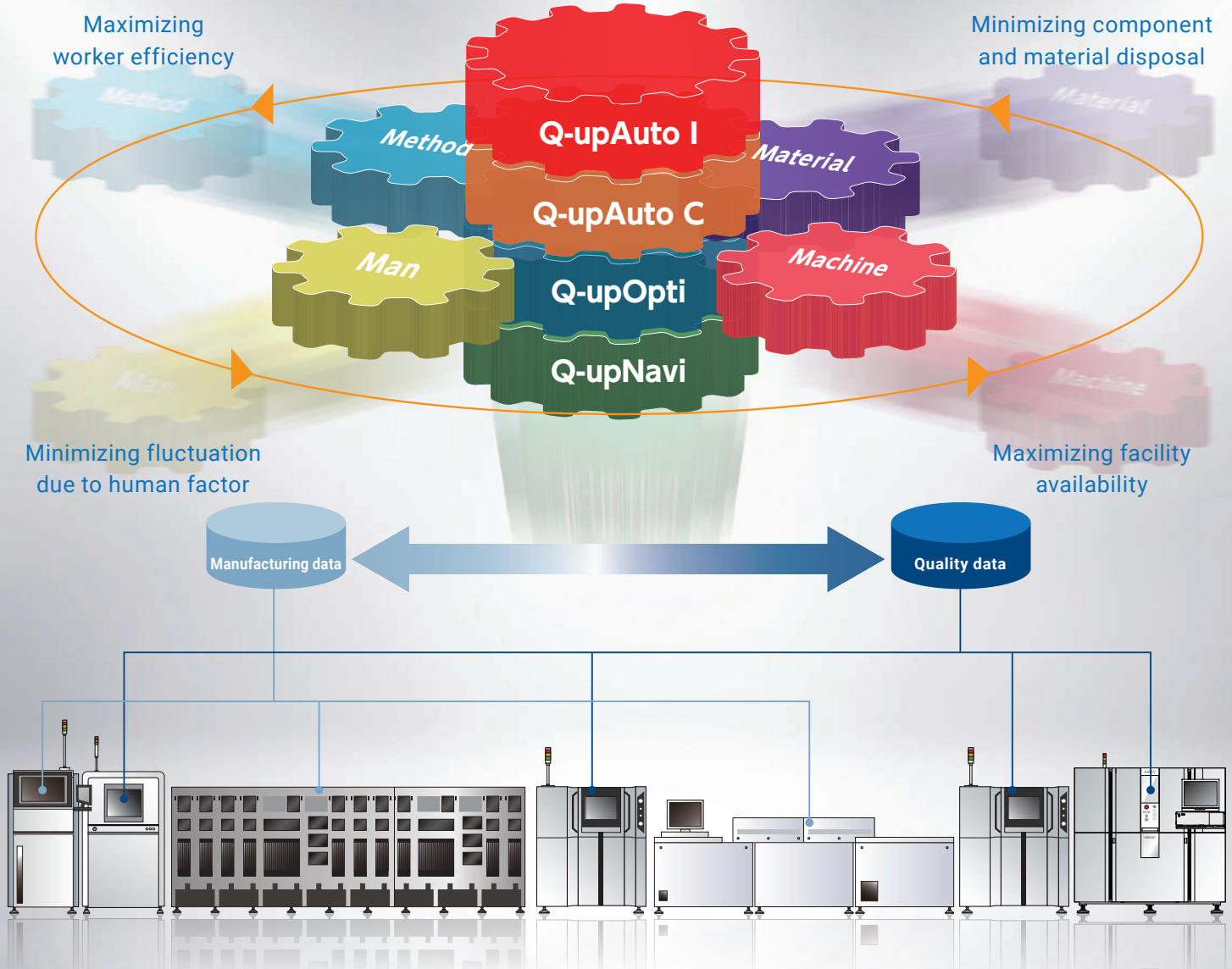


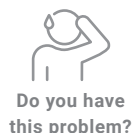
Omron supports "Manufacturing without defects".

Capturing production 4M data that "affects quality" in real time and supporting efficient improvement activities based on quality information from inspection equipment

Productivity improvement solution



Q-upAuto feat.Inspection (Abbreviation: Q-upAuto I)



- The operational status of inspection machines cannot be fully grasped, and countermeasures are delayed, resulting in inspection losses and backtracking.
- The number of personnel in charge is limited and there is no time to debug the inspection programs.
- Routine work such as making production reports takes time.

Q-upAuto I: Improve productivity of inspection machine operation with real-time automatic analysis

Dashboard

Visualize the operating status of all inspection machines without any skills. Inspection abnormalities can be noticed in real time, minimizing inspection production loss.



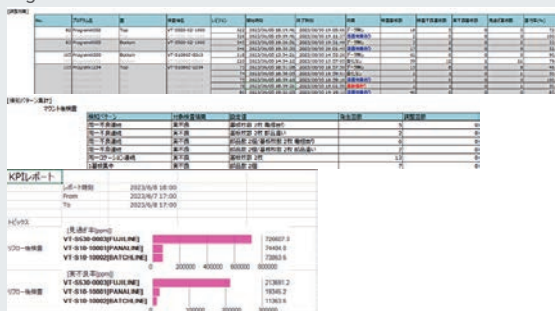
Inspection Status Notification

Automatically analyzes inspection abnormalities and sends push notifications. Even with limited teaching time, you can quickly find out the part number that needs to be tuned, improving work efficiency.



Reportng

Automatically creates the daily/weekly/monthly reports and changes in pass rate/false call rate/abnormal notification block etc., to confirm improvement effects. Significant reduction in indirect work man-hours



Performance Comparison

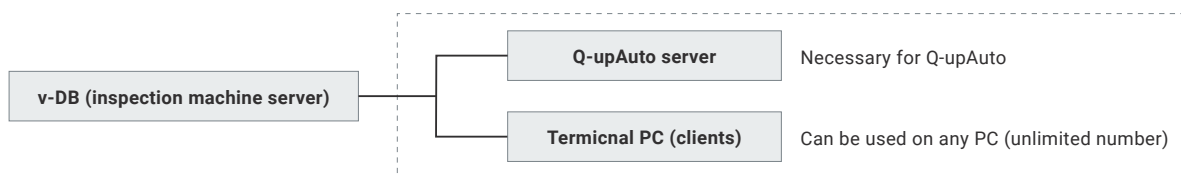
Confirm the improvement effect on pass rate and false-call rate over time for each line or inspection program. Improving work efficiency



Free trial available

You can start your own trial using your current V-DB. Please contact us if you are interested.

System configuration

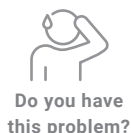


Q-upAuto compatible version: S10 series V4.01.00A or higher. S730/530 series V3.03.00C or higher

Introduction of subscription

Q-upAuto I/C is available as a subscription. Applications can be made for a minimum period of the required period and number of SMT lines.

Q-upAuto feat.Component (Abbreviation: Q-upAuto C)



- We want to produce high-quality products without producing defective products.
- We want to address issues in the mouter process based on quality standards for post-reflow inspection.
- We want to maintain the productivity of mounting process and automate the routine report works.

Q-upAuto C: Supports manufacturing of quality products by linking inspection result data and mouter data in real time

Analysis support

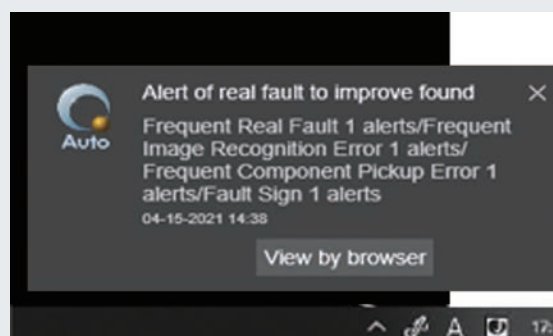
(cooperative analysis of inspection data and mouter data)

Using the inspection machine's "defective" judgment information as a starting point, Q-upAuto links it to mouter factors (advance, head, feeder status) and automatically analyze the relationships that occur.



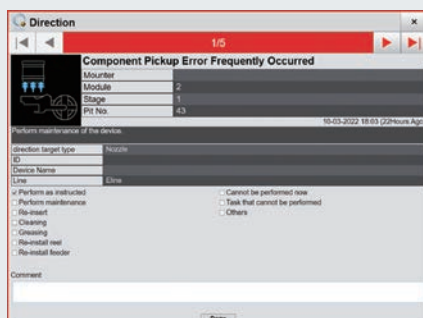
Quality Notification

Receive quality notifications when quality deterioration or abnormalities caused by the mounting process are detected.



Work order

You can find out the detailed status of the trouble mouter factor (nozzle, header, feeder), making countermeasures more efficient.



Reporting

Automatically creates daily/weekly/monthly reports. You can check quality results and error records for each mouter factor (nozzle, head, feeder), inspection pass rate and defective rate for each model.



System configuration

For Panasonic mounters, iLNB is required.

For FUJI mounters, Nexim is required.

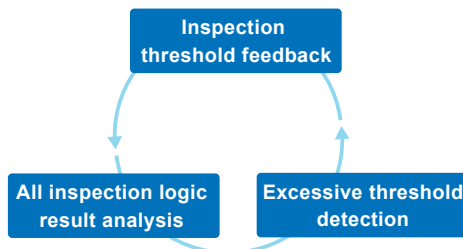
Q-upAuto server

It is necessary to purchase an Omron Q-upAuto connection license from Panasonic or FUJI. Please contact Panasonic or FUJI for details.
Q-upAuto compatible version: S10 series V4.01.00A or higher. S730/530 series V3.03.00C or higher

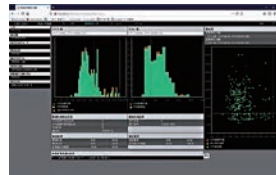
Q-upOpti

"Optimization of process inspection equipment operations"

Optimize the inspection threshold of SPI (post-print inspection machine) and pre-reflow inspection machine based on the quality standards of post-reflow inspection machine.



Optimization of inspection threshold



Improve productivity while maintaining quality

Q-upNavi

Analyzing quality data (e.g. defect images and inspection result) from inspection systems and productivity information (defect/false call rate).



Inspection result analysis	Process comparison	Color map	Displaying production status
Displaying analysis result based on predefined conditions	Displaying all components with inspection result of each process linked	A matrix of "component" and "time" is displayed showing quality fluctuation	Displaying transition of inspection defect rate and actual defect rate
Anyone can analyze data without depending on an expert	Anyone can understand the defect occurrence process at a glance	Easy to identify sudden defect and tendency defect	Easy to identify an item to improve

Collaboration with facilities of other manufacturers

Mounter manufacturer

• FUJI corporation / Nexim • Panasonic / iLNB

Printer inspection system manufacturer

• CKD Corporation / VP series

- The application examples described in this brochure are for reference only. Please check the functions and safety of the equipment before using it
- When using in conditions or environments not described in this brochure, or for applications such as nuclear energy control systems, railroad systems, aviation systems, vehicles, combustion systems, medical equipment, amusement machines, safety equipment and others that could present a risk to life or property, Omron assumes no guarantee regarding the products except in the case of special product uses identified by Omron or with special agreement.
- When exporting (or providing to non-residents) this product, its parts or technology falling under the categories of export permissions or approved cargo (or technology) stipulated in the Foreign Exchange and Foreign Control Trade Law, an export permission and approval (or permission for service transaction) shall be necessary based on the same law.

OMRON Corporation

INDUSTRIAL AUTOMATION COMPANY INSPECTION SYSTEMS BUSINESS DIVISION SALES DEPARTMENT

Shinagawa Front Bldg. Conference 7F
2-3-13 Kounan Minato-ku Tokyo
108-0075 JAPAN
TEL +81-3-6718-3550 FAX:+81-3-6718-3553

OMRON INDUSTRIAL AUTOMATION (CHINA) CO., LTD.

F20,TowerA,NEO Building,6011ShennanAvenue,
Futian District, Shenzhen, Guangdong 518048, China
TEL:+86-755-8359-9028 FAX:+86-755-8359-9628

Omron AOI Business Europe, Omron Europe B.V.

Zilverenberg 2, 5234 GM 's-Hertogenbosch,
The Netherlands
TEL:+31(0)736 481811 FAX:+31(0)736 481879

OMRON TAIWAN ELECTRONICS INC.

9F-1, No.8, Ziqiang S. RD., Zhubei City, Hsinchu
County 302, Taiwan R.O.C.
TEL: +886-3-667-5557 FAX: +886-3-667-5558

OMRON ELECTRONICS KOREA CO.,LTD.

21F, KyoboTower B Wing, 465, Gangnam-daero,
Seocho-gu, Seoul, Korea 137-920
TEL:+82-2-3483-7789 FAX:+82-2-3483-7788

Omron Asia Pacific Pte Ltd

438B Alexandra Road #08-01/02
Alexandra Technopark, Singapore 119968
Tel:(65)6835-3011 Fax:(65)6835-2711

Omron Automation Pvt. Ltd.

The Qube, 5th Floor, Unit No. 501-504 MV Road,
Marol, Andheri (East), Mumbai - 400 059, India
Fax: (91-22) 7115 5602

OMRON ELECTRONICS LLC

2895 Greenspoint Parkway, Suite 200,
Hoffman Estates, IL 60169, U.S.A
TEL:(1) 847-843-7900 FAX:(1) 847-843-7787

Authorized Distributor: